



How can functionality and aesthetics be combined in a reduced way?
ACO DRAIN® SlotTop. Designed for aesthetic drainage solutions.



The ACO service chain



train

Information and Training



design

Design and optimization



support

On-site support



care

Service and maintenance

Inspirational Tools



ACO DRAIN® Lookbook 'The Aesthetics of the Line'

ACO developed the Lookbook especially for architects and planners. You will find a great variety of inspirational projects from around the world, where our products support the aesthetical appearance.



ACO Grating Selector

The Grating Selector developed by ACO is a handy tool helping you to find the right combination of gratings and surface design. Similarly to a color fan, it will help you to visualize your ideas and decide easier for the right design.



ACO DRAIN® Visualizer

Similarly to the grating selector, the ACO Visualizer was developed to help you pick the most suitable designs for your project. With innumerable combinations to completely individual designs, you are in a position to create something unique.

ACO Greece

Tel. +30 693 610 3336

dvarelidis@aco.com.gr

www.aco.com.gr

ACO. The future of drainage.



Singularity and charisma are key elements in aesthetic surface designs as a part of architectural concepts.

Drainage is a significant and mandatory part of an homogenous appearance of surface design. Gratings and channels can influence the look of surfaces tremendously.

Line drainage, with its two sided slope and less pipework, ensures supportive and clean optical appearance.

The ACO DRAIN® SlotTop channels were developed to make both 'hiding' and 'highlighting' possible. Functionality and aesthetics always create a unique relationship.

The all-new ACO SlotTop range fits exactly the needs of timeless design.

As an architect you can utilize ACO DRAIN® SlotTop to create outstanding solutions.

Fresh designs such as Double, Triple and Strip together with newly added features will help to create playful and unique surfaces.

"It takes many strings tuned differently to create harmony."

Joseph Karl Benedikt Freiherr von Eicherdorff

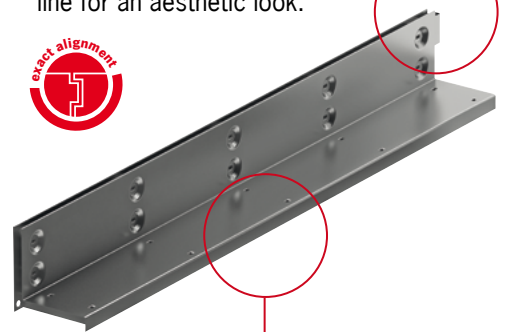




ACO DRAIN® SlotTop Single

Connector

- The new connector ensures easier installation. This feature guarantees that the slot channels form a coherent line for an aesthetic look.



Bent edge

- The horizontal edge is bent down. This way it is ensured, that there is no water leakage and no sand and dirt is getting into the channel.

Benefits Overview:

- Outstanding, but reduced look.
- Can be installed with a great variety of paving material.
- Three standard heights available. Customized heights are optional.
- Suitable for both ACO DRAIN® Multiline and XtraDrain channels.
- The protective cover lowers the risk of damages during installation significantly.
- Revision-element for easy maintenance and cleaning.
- Fully EN 1433 tested and certified.
- Totally secured system.
- Made out of stainless steel. (Galv. steel available for SlotTop Single.)

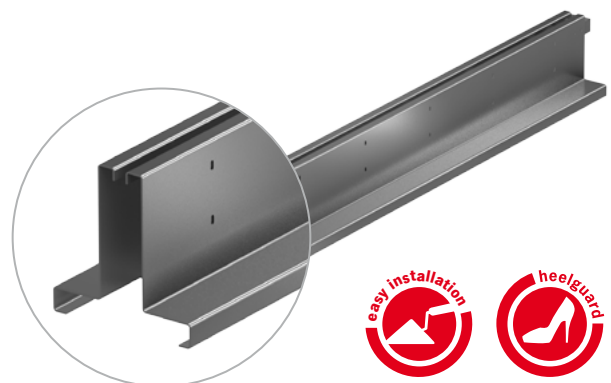


Are you looking for inconspicuous line drainage?

ACO DRAIN® SlotTop Strip

‘Hide’ or ‘highlight’ are two different approaches when deciding on surface design and drainage. The new SlotTop Strip is the inconspicuous but selfconfident choice. It’s timeless style suits both to historical buildings and modern structures.

As an additional feature the width of the outside edge can be customised.



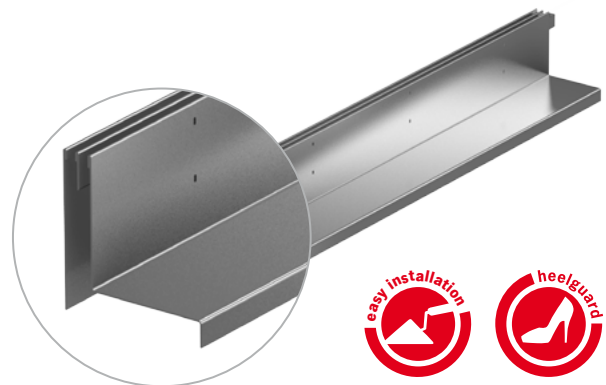


**Would you like to underline
different materials in your paving?**

ACO DRAIN® SlotTop Double

The SlotTop double is the right choice to highlight the clash of two materials. The two lines broadcast the differences and the unity at the same time.

Two parallel running lines can have a clean and calming effect and can counteract too much motion in the surface design.



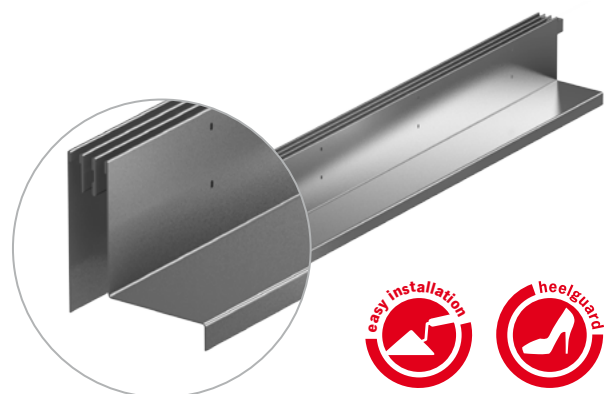


**Are you looking for drainage
that helps you create unique surfaces?**

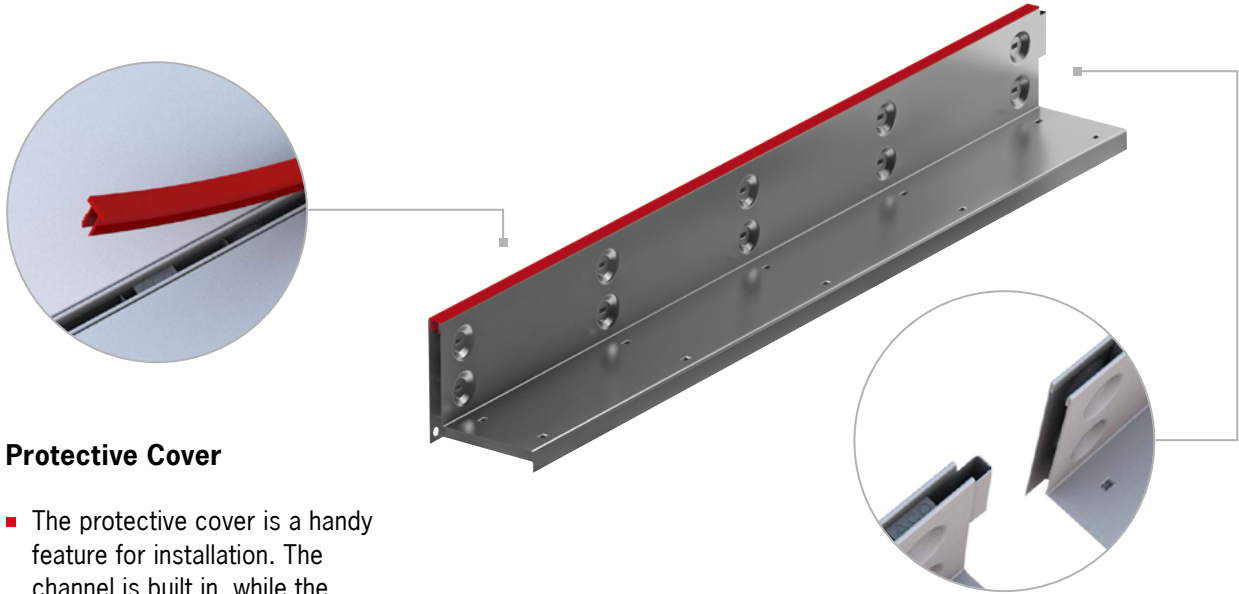
ACO DRAIN® SlotTop Triple

SlotTop Triple is the playful variant. In combination with a colourful or patterned paving it creates an exciting design. It highlights drainage and enables architects to underline, how functional elements can become aesthetical details.

As an additional quality, the SlotTop Triple has an even bigger intake area.



What are the most important advantages during installation?



Protective Cover

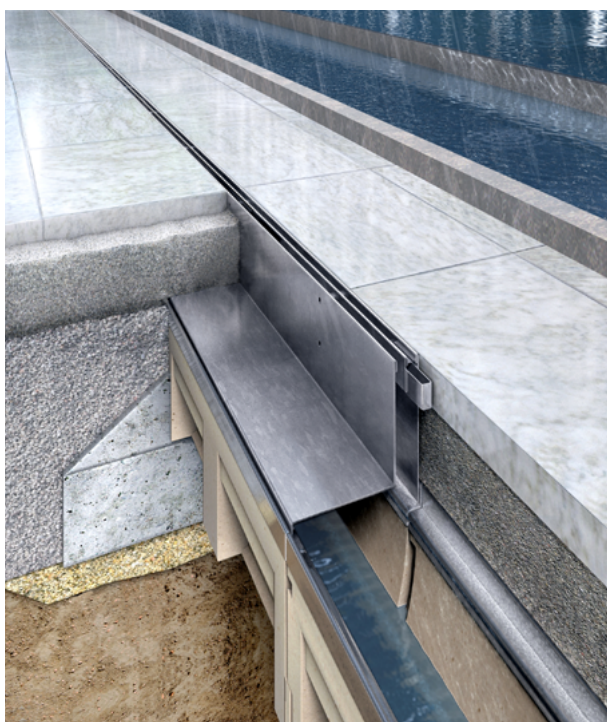
- The protective cover is a handy feature for installation. The channel is built in, while the protective cover is still covering the slot. Concrete can be placed, paving or clay can be installed.
- Once the surface is finished, the protective cover can be removed. No sand or dirt enters the channel. No scratches on the slot from installation.



For easy installation

- The connector ensures perfect gearing of the channels. This feature guarantees that the slot channels form a coherent line for an aesthetic look.

Why are the SlotTops products so easy to clean and maintain?



The revision-element allows easy access (half meter length) to the channel and can be lifted with the help of a special grating hook.

The integrated sump unit can be taken out, emptied, cleaned and put back again. Additionally the channel can be easily purged.

